

BEN 10™

PROTECTOR OF EARTH



INSTRUCTION BOOKLET



⚠ WARNING: PHOTSENSITIVITY/EPILEPSY/SEIZURES

READ BEFORE USING YOUR PLAYSTATION®2 COMPUTER ENTERTAINMENT SYSTEM.

A very small percentage of individuals may experience epileptic seizures or blackouts when exposed to certain light patterns or flashing lights. Exposure to certain patterns or backgrounds on a television screen or when playing video games may trigger epileptic seizures or blackouts in these individuals. These conditions may trigger previously undetected epileptic symptoms or seizures in persons who have no history of prior seizures or epilepsy. If you, or anyone in your family, has an epileptic condition or has had seizures of any kind, consult your physician before playing. **IMMEDIATELY DISCONTINUE** use and consult your physician before resuming gameplay if you or your child experience any of the following health problems or symptoms:

- dizziness
- altered vision
- eye or muscle twitches
- loss of awareness
- disorientation
- seizures
- any involuntary movement or convulsion

RESUME GAMEPLAY ONLY ON APPROVAL OF YOUR PHYSICIAN.

Use and handling of video games to reduce the likelihood of a seizure

- Use in a well-lit area and keep as far away as possible from the television screen.
 - Avoid large screen televisions. Use the smallest television screen available.
 - Avoid prolonged use of the PlayStation 2 system.
Take a 15-minute break during each hour of play.
 - Avoid playing when you are tired or need sleep.
-

Stop using the system immediately if you experience any of the following symptoms: lightheadedness, nausea, or a sensation similar to motion sickness; discomfort or pain in the eyes, ears, hands, arms, or any other part of the body. If the condition persists, consult a doctor.

WARNING TO OWNERS OF PROJECTION TELEVISIONS:

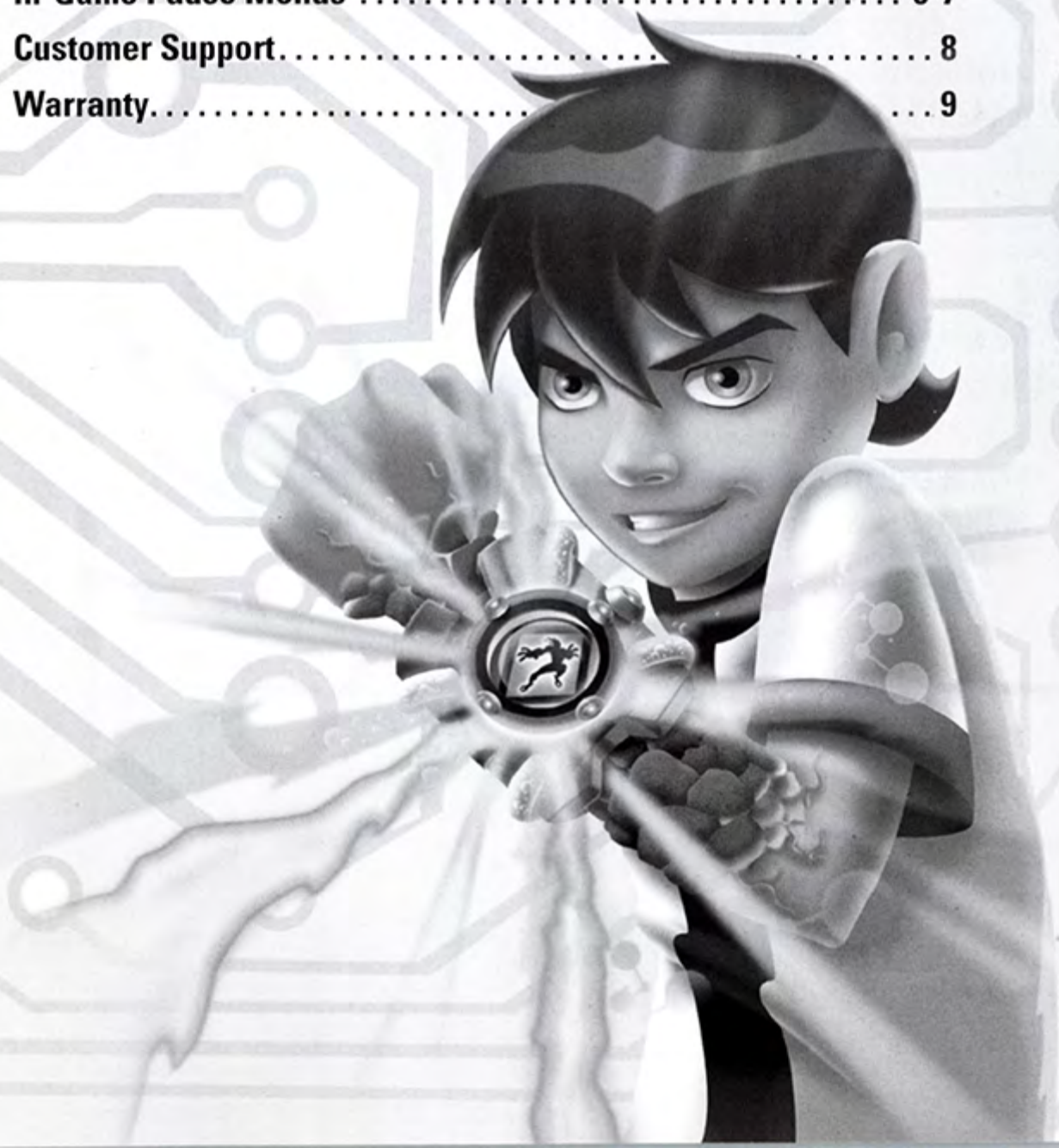
Do not connect your PlayStation 2 system to a projection TV without first consulting the user manual for your projection TV, unless it is of the LCD type. Otherwise, it may permanently damage your TV screen.

HANDLING YOUR PLAYSTATION 2 FORMAT DISC:

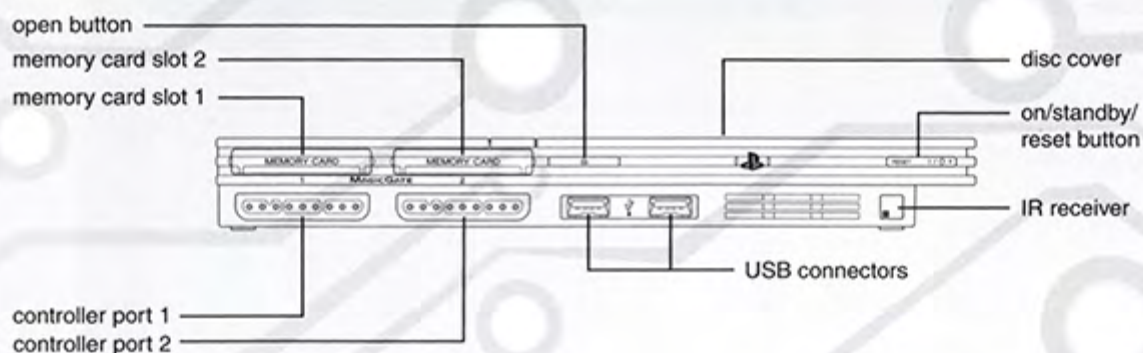
- This disc is intended for use only with PlayStation 2 consoles with the NTSC U/C designation.
- Do not bend it, crush it or submerge it in liquids.
- Do not leave it in direct sunlight or near a radiator or other source of heat.
- Be sure to take an occasional rest break during extended play.
- Keep this compact disc clean. Always hold the disc by the edges and keep it in its protective case when not in use. Clean the disc with a lint-free, soft, dry cloth, wiping in straight lines from center to outer edge. Never use solvents or abrasive cleaners.

TABLE OF CONTENTS

Getting Started	2
Starting Up.....	3
Game Controls.....	3
Starting Your Game	4
Cooperative Mode	4
Saving your Game.....	4
Game Screen.....	5
Main Menu.....	5
In-Game Pause Menus	6-7
Customer Support.....	8
Warranty.....	9



GETTING STARTED



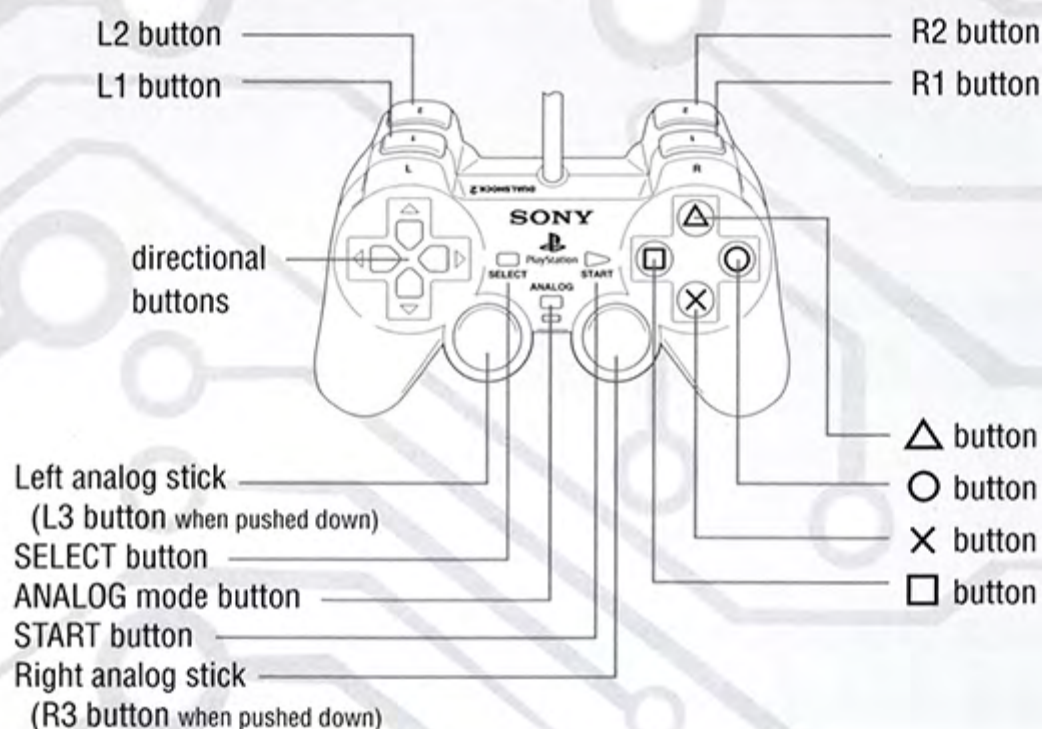
Set up your PlayStation®2 computer entertainment system according to the instructions supplied with your system. Check that the system is turned on (the on/standby indicator is green). Insert the Ben 10: Protector of Earth disc in the system with the label side facing up. Attach game controllers and other peripherals as appropriate. Follow the on-screen instructions and refer to this manual for information on using the software.

Memory Card (8 MB)(for PlayStation®2)

To save game settings and progress, insert a memory card (8 MB)(for PlayStation®2) into MEMORY CARD slot 1 of your PlayStation®2 system. You can load saved game data from the same memory card or any memory card (8 MB)(for PlayStation®2) containing previously saved games.

STARTING UP

DUALSHOCK®2 ANALOG CONTROLLER CONFIGURATIONS



GAME CONTROLS

	Menus	Game
Directional Buttons	Move selection cursor	Not Used
Left Analog Stick	Move selection cursor	Move Character
Right Analog Stick	Not Used	Cycles Omnitrix
×	Confirm	Jump
○	Not Used	Special Attack
□	Not Used	Light Attack
△	Back	Heavy Attack
L1	Not Used	Block
R1	Not Used	Activate Omnitrix
L2	Not Used	Cycle Omnitrix Backward
R2	Not Used	Cycle Omnitrix Forward
SELECT	Not Used	Not used
START	Not Used	Pause Game
L3	Not Used	Not Used
R3	Not Used	Activate Omnitrix

STARTING YOUR GAME

To start Ben 10™: Protector of Earth press the Start Button at the Title Screen. If there is no saved data on the Memory Card you will need to choose NEW GAME to start playing. After choosing NEW GAME select one of the three difficulties (Easy, Normal or Hero) then choose one of the three profiles to start the game.

In order to continue playing an already started game, choose CONTINUE GAME on the Main Menu. After selecting CONTINUE GAME select one of the profiles that has save data on it to continue your game.

COOPERATIVE MODE

Cooperative mode can be accessed at any time. The second player is able to join in the middle of any game. In order to engage in 2 player cooperative mode, make sure there are two controllers plugged into your PlayStation®2 system and press the Start button on the second controller while in-game.

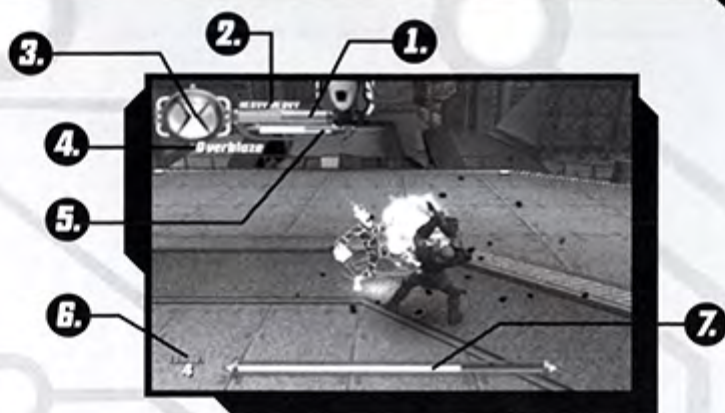
SAVING YOUR GAME

Ben 10™: Protector of Earth has an auto-saving feature that will automatically save your game after you complete a location. You will need 252 KB of free space on your Memory Card in order to save your game.

The game automatically saves when you complete a location. If you choose to quit a location that you have not yet completed, your progress through the level will not be saved. However, any collectibles, upgrades, or experience that you gained in the location before you quit will be saved.



GAME SCREEN



- 1. Stamina Bar** – This indicates how much health your alien hero (or Ben) has. When your alien hero gets hit, his stamina is reduced. When the stamina is completely depleted, the alien hero will revert back to Ben. If Ben's stamina is depleted, you will have to start from the last checkpoint you reached in the location.
- 2. Combo indicator** – This indicates what type of attack combos you've triggered.
- 3. Experience Bar** – This indicates how much experience you have accumulated. As Ben defeats enemies, his Experience Bar will fill up allowing him to unlock new attack combos when the bar is filled.
- 4. Combo Name** – This indicates the name of the attack combo that you've triggered.
- 5. Omnitrix** – This meter displays how much power is left in the Omnitrix. The Omnitrix will drain slowly over time. It will drain faster as you execute more powerful combo moves. When the meter runs out of energy, you will switch back to Ben form.
- 6. Combo Count** – This indicates the number of consecutive hits you've landed on an enemy.
- 7. Boss Stamina Bar** – This indicates the amount of health that a boss villain has.

MAIN MENU



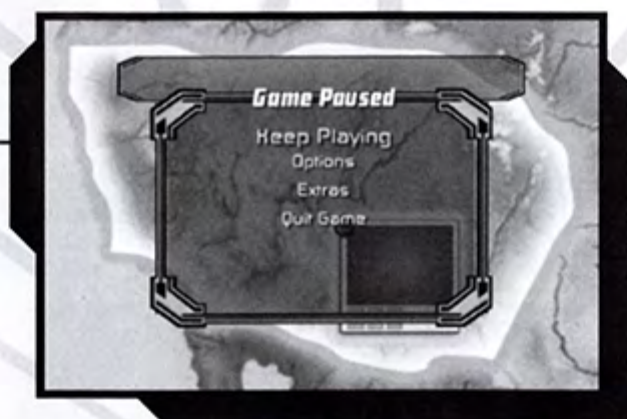
NEW GAME	Allows you to start a new game
CONTINUE GAME	Allows you to load a previously saved game
OPTIONS	Allows you to change game OPTIONS

IN-GAME PAUSE MENU



KEEP PLAYING	Returns to the game
COMBO LIST	Shows all of the combos unlocked for each of the Alien Forms
RETURN TO MAP	Takes you back to the Area Map
OPTIONS	Enters the OPTIONS Menu

OVERVIEW/REGION MAP PAUSE MENU



KEEP PLAYING	Returns to the game
OPTIONS	Enters the OPTIONS Menu
EXTRAS	Enters the EXTRAS Menu
QUIT GAME	Takes you back to the Title Screen

COOPERATIVE MODE PAUSE MENU



KEEP PLAYING	Returns to the game
COMBO LIST	Shows all of the combos unlocked for each of the Alien Forms
RETURN TO MAP	Takes you back to the Area Map
OPTIONS	Enters the OPTIONS Menu
DROP PLAYER	Allows the first or second player to leave the game in cooperative mode

Tip - If there is a second controller connected to the PlayStation®2 system it can be used to move through the in-game and main menus as well as skipping in-game cut scenes.



WWW.BEN10THEVIDEOGAME.COM

CUSTOMER SUPPORT

EVERYONE AT D3PUBLISHER OF AMERICA WORKS VERY HARD TO MAKE SURE THAT YOU, OUR CUSTOMER, HAVE AS MUCH FUN PLAYING OUR PRODUCTS AS WE HAD MAKING THEM. WE MAKE EVERY EFFORT TO ENSURE THAT OUR PRODUCTS ARE PROBLEM-FREE. BUT IN THE RARE INSTANCE WHERE SOMETHING HAS SLIPPED THROUGH OUR PRODUCT TESTING PROCESS, WE WANT TO GET A SOLUTION TO YOU AS QUICKLY AS POSSIBLE.

At Customer Support, we take our jobs seriously. So, in the unfortunate event that you do encounter a problem with one of our products, please contact us. You will find that the answers to many of your questions are available on our website, including tips and strategies on playing the game. If you cannot find the answer you are looking for, you will not have to make your way through an obstacle course.

Our living, breathing human beings will help you get back to the important things in life... like playing video games.

Website:

www.d3publisher.us

This is the best place to go for tips on playing our games!

Email:

support@d3p.us

Phone:

(480) 517- 4900

Monday – Friday

8am – 5pm Arizona Standard Time

D3Publisher of America, Inc. 11500 W. Olympic Blvd. Suite 460, Los Angeles, CA 90064

CARTOON NETWORK, BEN 10, the logos and all related characters and elements are trademarks of and © Cartoon Network.
(s07)

Game and Software ©2007 D3Publisher of America, Inc. Published exclusively by D3Publisher of America, Inc. worldwide. D3Publisher and its logo are trademarks or registered trademarks of D3Publisher of America, Inc. Developed by High Voltage Software, Inc. High Voltage Software, Inc. and its logo are trademarks of High Voltage Software, Inc. All rights reserved. Dolby, Pro Logic, and the double-D symbol are trademarks of Dolby Laboratories. All other trademarks and trade names are properties of their respective owners.

"PlayStation", "PS" Family logo, and "PSP" are registered trademarks and "UMD" is a trademark of Sony Computer Entertainment Inc. "Memory Stick Duo" and "Memory Stick PRO Duo" are trademarks of Sony Corporation.

LIMITED WARRANTY

1. LIMITED WARRANTY. D3PUBLISHER OF AMERICA, INC. AND ITS PARENT AND AFFILIATES (COLLECTIVELY REFERRED TO AS "COMPANY") AND/OR ITS DISTRIBUTOR WARRANT(S) TO THE ORIGINAL CONSUMER PURCHASER OF THIS SOFTWARE PRODUCT ENTITLED "BEN 10™: PROTECTOR OF EARTH," WHICH INCLUDES SOFTWARE AND ANY ASSOCIATED MEDIA AND/OR PRINTED MATERIALS (TOGETHER CALLED "PROGRAM"), THAT THE RECORDING MEDIUM ON WHICH THE PROGRAM IS RECORDED WILL BE FREE FROM DEFECTS IN MATERIAL AND WORKMANSHIP FOR 90 DAYS FROM THE DATE OF PURCHASE. IF THE RECORDING MEDIUM IS FOUND DEFECTIVE WITHIN 90 DAYS OF ORIGINAL PURCHASE, YOU MAY RETURN THE PROGRAM AND ALL ACCOMPANYING MATERIALS ALONG WITH YOUR ORIGINAL RECEIPT TO THE PLACE YOU OBTAINED IT FOR A FULL REFUND OR REPLACEMENT, SUBJECT TO SUCH RETAILER'S RETURN POLICY. THIS WARRANTY IS LIMITED TO THE RECORDING MEDIUM CONTAINING THE PROGRAM AS ORIGINALLY PROVIDED BY COMPANY AND IS NOT APPLICABLE TO NORMAL WEAR AND TEAR. THIS WARRANTY SHALL NOT BE APPLICABLE AND SHALL BE VOID IF THE DEFECT HAS ARISEN THROUGH ABUSE, MISTREATMENT, OR NEGLIGENCE. ANY IMPLIED WARRANTIES PRESCRIBED BY STATUTE ARE EXPRESSLY LIMITED TO THE 90-DAY PERIOD DESCRIBED ABOVE.

2. To the maximum extent allowed by law, Company, its licensors and subcontractors do not warrant any connection to, transmission over, or results or use of, any network connection or facilities provided (or failed to be provided) through the Program. You are responsible for assessing your own hardware needs and, if applicable, transmission network needs, and the results to be obtained therefrom. YOU EXPRESSLY AGREE THAT USE OF THE PROGRAM IS AT YOUR SOLE RISK. THE PROGRAM IS PROVIDED ON AN "AS IS," "AS AVAILABLE" BASIS, UNLESS SUCH WARRANTIES ARE LEGALLY INCAPABLE OF EXCLUSION. EXCEPT WITH RESPECT TO THE LIMITED CD-ROM WARRANTY AS SET FORTH IN SECTION 1 ABOVE, COMPANY AND ITS LICENSORS DISCLAIM ALL WARRANTIES AND CONDITIONS, WHETHER ORAL OR WRITTEN, EXPRESS OR IMPLIED, INCLUDING WITHOUT LIMITATION ANY IMPLIED WARRANTIES OR CONDITIONS OF MERCHANTABILITY, FITNESS FOR A PARTICULAR PURPOSE, NON-INFRINGEMENT OF THIRD PARTY RIGHTS, AND THOSE ARISING FROM A COURSE OF DEALING OR USAGE OF TRADE, REGARDING THE PROGRAM. COMPANY AND ITS LICENSORS ASSUME NO RESPONSIBILITY FOR ANY DAMAGES SUFFERED BY YOU, INCLUDING, BUT NOT LIMITED TO, LOSS OF DATA, ITEMS OR OTHER MATERIALS FROM DELAYS, NON-DELIVERIES, ERRORS, CAUSED BY COMPANY, ITS LICENSORS, LICENSEE AND/OR SUBCONTRACTORS, OR BY YOUR OWN ERRORS AND/OR OMISSIONS. Company and its licensors make no warranty with respect to any related software or hardware used or provided by Company in connection with the Program except as expressly set forth above.

3. LIMITATION OF LIABILITY. YOU ACKNOWLEDGE AND AGREE THAT COMPANY AND ITS LICENSORS SHALL NOT ASSUME OR HAVE ANY LIABILITY FOR ANY ACTION BY COMPANY OR ITS CONTENT PROVIDERS, OTHER PARTICIPANTS OR OTHER LICENSORS WITH RESPECT TO CONDUCT, COMMUNICATION OR CONTENT OF THE PROGRAM. COMPANY AND ITS LICENSORS SHALL NOT BE LIABLE FOR ANY INDIRECT, INCIDENTAL, SPECIAL, PUNITIVE, EXEMPLARY, OR CONSEQUENTIAL DAMAGES RESULTING FROM POSSESSION, USE, OR MALFUNCTION OF THE PROGRAM, INCLUDING DAMAGES TO PROPERTY, LOSS OF GOODWILL, COMPUTER FAILURE OR MALFUNCTION AND, TO THE EXTENT PERMITTED BY LAW, DAMAGES FOR PERSONAL INJURIES, EVEN IF ADVISED OF THE POSSIBILITY OF SUCH DAMAGES. EXCEPT AS EXPRESSLY PROVIDED HEREIN, COMPANY'S AND ITS LICENSORS' ENTIRE LIABILITY TO YOU AND YOUR EXCLUSIVE REMEDY FOR ANY BREACH OF THIS WARRANTY IS LIMITED SOLELY TO THE TOTAL AMOUNT PAID BY YOU FOR THE PROGRAM, IF ANY. BECAUSE SOME STATES DO NOT ALLOW THE EXCLUSION OR LIMITATION OF LIABILITY FOR CERTAIN DAMAGES, IN SUCH STATES COMPANY'S AND ITS LICENSORS' LIABILITY IS LIMITED TO THE EXTENT PERMITTED BY LAW.

4. GENERAL PROVISIONS. This warranty shall be governed by the laws of the State of California and the United States without regard to its conflicts of laws rules and you consent to the exclusive jurisdiction of the state and federal courts in Los Angeles County, California. The United Nations Convention on Contracts for the International Sale of Goods shall not apply to this Program. This warranty represents the complete warranty concerning the Program between you and Company.

BEN 10

CHECK OUT THE NEW DELUXE OMNITRIX

YOUR BATTLES WILL BE CHALLENGING!
-YOUR SKILLS NEED TO BE QUICK!



IT'S A BATTLE AGAINST VILLAINS AND A RACE AGAINST THE CLOCK!

1



TURN THE OMNITRIX & SELECT A HERO!

NORMAL MODE



2



CHOOSE FROM 4 MODES!

BATTLE MODE



3



CHECK YOUR SCORE!

BEST TIME	
1	5:39
2	1:21
3	9:14

3 BEST TIMES WILL BE DISPLAYED!



HEROES VS. VILLAINS!



D3Publisher of America, Inc.
 11500 W. Olympic Blvd. Suite 460
 Los Angeles, CA 90064

PRINTED IN USA

MADE IN CHINA

Conforms to toy safety standards ASTM F963-03. Colors, style and decorations may vary. Distributed by Bandai America Incorporated, 5551 Katella Avenue, Cypress, California 90630. Used under license by Bandai America Incorporated. Bandai logo is a registered trademark of Bandai. All Rights Reserved. Package © 2007 Bandai. CARTOON NETWORK, the logo, BEN 10 and all related characters and elements are trademarks of and © Cartoon Network.

(S07)

Game and Software © 2007 D3Publisher of America, Inc. Published exclusively by D3Publisher of America, Inc. worldwide. D3Publisher and its logo are trademarks or registered trademarks of D3Publisher of America, Inc.



BAN DAI

bandai.com